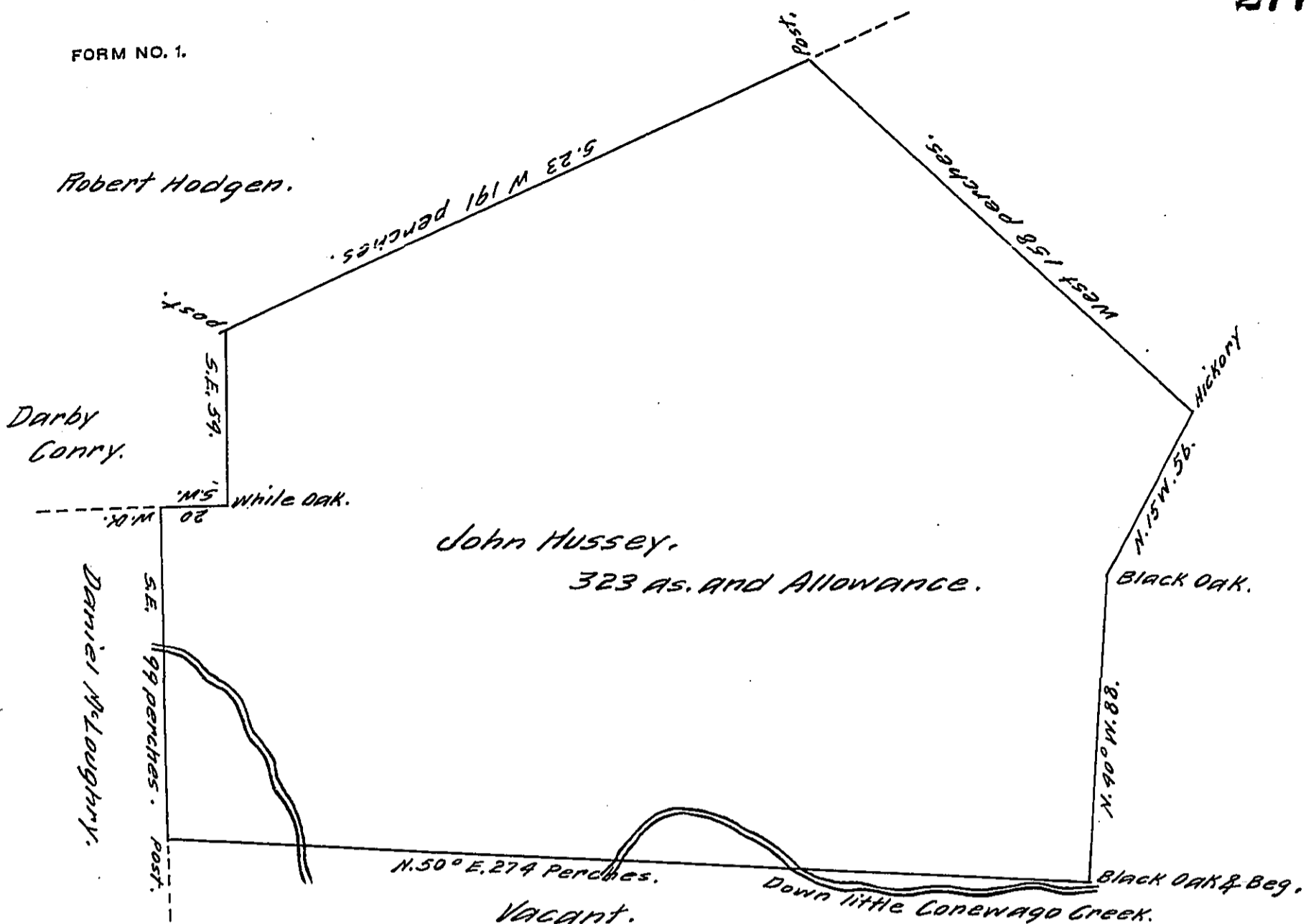


FORM NO. 1.



A Draught of a Tract of Land, Situate part in Newbury & part in Manchester Townships in the County of York [late part of the County of Lancaster) containing three hundred and twenty three Acres and the Allowance of Six Acres pCent for Roads and Highways. Surveyed for James Murray the 9th day of October 1799. by Thomas Cookson Esquire late Deputy Surveyor of Lancaster County but by what warrant I cannot find as James Murray is long since Dead and the Land sold by his Heirs at Law to John Hussey who obtained a warrant for the same Land viz adjoining his other Land and Land then mine viz McLoughery's bearing Date the 12th. December 1753 directed to me the Lines thereof examined the 23d April 1762. Protracted & Calculated.

p. Geo. Stevenson one of the Exrs. of Thos. Cookson Deced & Dy. Sr.

IN TESTIMONY that the above is a copy of the original remaining on file in the Department of Internal Affairs of Pennsylvania, made conformably to an Act of Assembly approved the 16th day of February, 1833, I have hereunto set my Hand and caused the Seal of said Department to be affixed at Harrisburg, this thirteenth day of September 1911

Henry Fowler,
Secretary of Internal Affairs.